



*Sorghum: the safe
bet for the future*

SC A&A FARMS SRL VASLUI ROMANIA

LOCATION

Romaniae -Vaslui - East region

In this region :

- ✓ Mainly cereals
- ✓ Vineyard
- ✓ Hen and chicken farming



HISTORY - ACREAGE AND CROPS

Farm since 1999: 305ha

Wheat : 100ha

Sunflower : 40ha

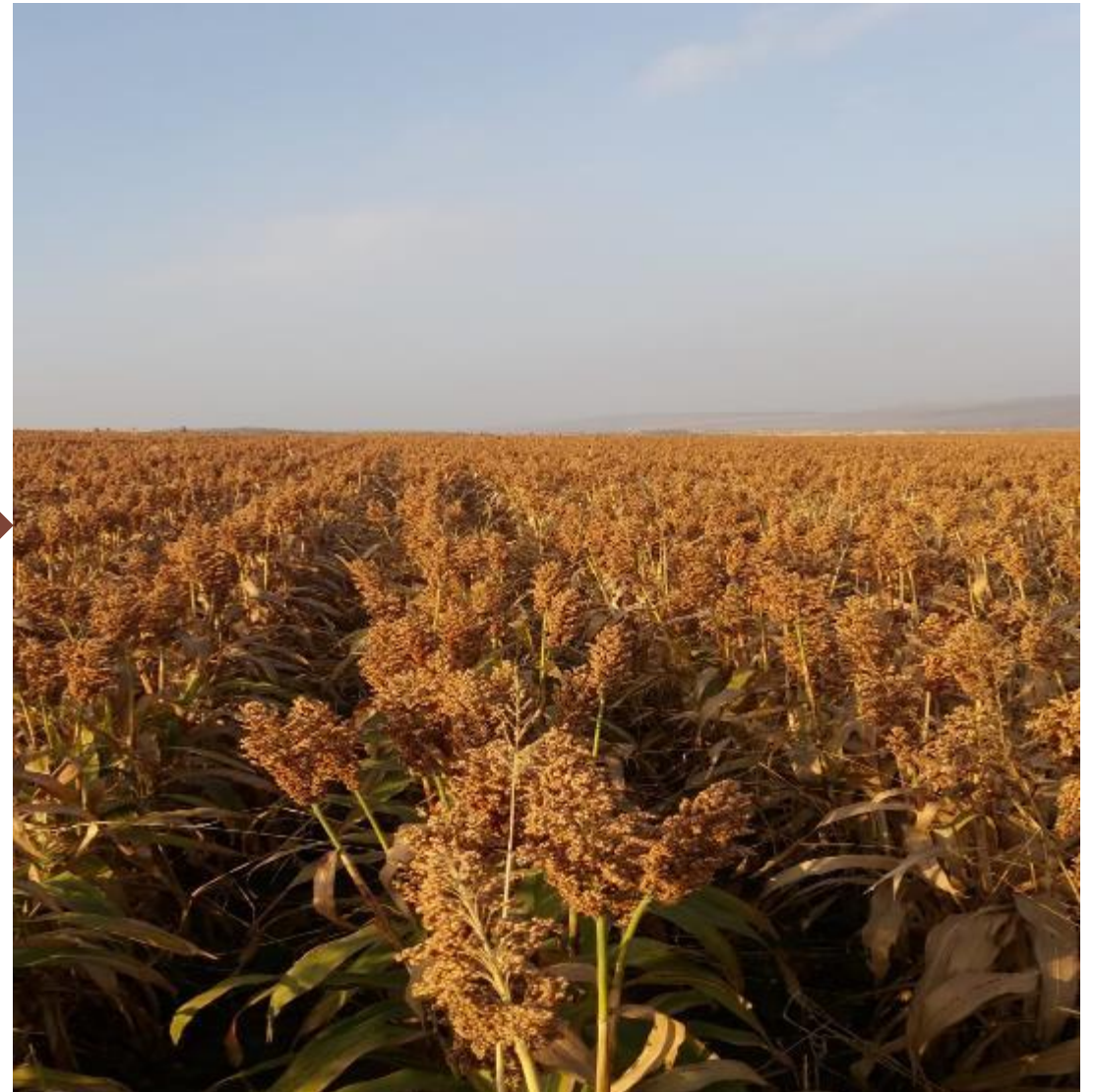
Corn : 125ha

Sorghum : 40ha

And hen production

Sorghum is the 4th crop with sunflower

Sorghum on my farm this year



HEN PRODUCTION

Warehouse



SORGHUM USE FOR FEEDING CHICKEN

Recette alimentaire pour poules pondeuses de 28 à 50 semaines sans sorgho

Matières premières	norma consum	proteina	energie	PRIX	VALEUR
MAIS	38,072	8,5	3300	0,78	0,296962
BLE	10	12	2850	0,78	0,078
SORGHO	0	11	3300	0,65	0
ORGE	6	11	2800	0,7	0,042
TOURTEAUX DE SOJA	23,8	45	2750	1,92	0,45696
TOURTEAUX DE TURNESOL	7	36	1800	0,99	0,0693
Ph.monocalcic	0,85	0		2,33	0,019805
CaCO3	9,6			0,22	0,02112
ulei vegetal	3,2		8800	3	0,096
Layer 0,5	0,5			7,5	0,0375
LIZINA	0,14	94	4050	6,53	0,009142
metionina	0,25	58	5280	11,2	0,028
sare	0,34			0,36	0,001224
CAROFIL REED	0,004			310	0,0124
carofill reed	0,004			305	0,0122
HIPHOS	0,01			36,7	0,00367
roxazym vp	0,015			32	0,0048
roxazym wx	0,015			39,6	0,00594
captex	0,2			6	0,012
total	100	18,60272	2790,346	59,4	1,207023
PRET VRAC		18,55	2800		1,357023
profit					0,040711
FCA PRIX FINAL					1,397733

Recette pour poules pondeuses avec Sorgho

faza 1	28-50 SAPT			R_21,5	
Matières premières	norma consum	proteina	energie	prix	valoare
MAIS	17,87	8,5	3300	0,78	0,139386
BLE	8	12	2850	0,78	0,0624
SORGHO	24	11	3300	0,65	0,156
ORGE	6	11	2800	0,7	0,042
TOURTEAUX DE SOJA	22,3	45	2750	1,92	0,42816
TOURTEAUX DE TURNESOL	7	36	1800	0,99	0,0693
ph.monocalcic	0,85	0		2,33	0,019805
CaCO3	9,6			0,22	0,02112
ulei vegetal	2,9		8800	3	0,087
Layer 0,5	0,5			7,5	0,0375
LIZINA	0,14	94	4050	6,53	0,009142
metionina	0,25	58	5280	11,2	0,028
sare	0,34			0,36	0,001224
carofill yellow	0,005			310	0,0155
carofill reed	0,005			305	0,01525
HIPHOS	0,01			36,7	0,00367
roxazym vp	0,015			32	0,0048
roxazym wx	0,015			39,6	0,00594
captex	0,2			6	0,012
total	100	18,61055	2791,03	59,4	1,158197
cheltuieii industrializ					0,15
PRET VRAC					1,308197
profit	1				0,039246
FCA PRIX FINAL					1,347443

WHY SORGHUM ?

I used **white and red sorghum** mixing with other cereals for the **hen production**

Results were good

We got the same results in term of production and even this better economical results

In the 2 farms, I use **450T of feed/month**

With sorghum I am **reducing** my feeding **cost by 10,75€/T** so in total 4838€/month

Other advantages :

Can be use without grinding

Appetite increase

Animal wellbeing is better

COLLABORATION SC A&A FARMS SRL - SC COMBAVIPOR SA

SC COMBAVIPOR SA is a compounding feed company

Combavipor buy our farm produce : wheat, sorghum, corn and give us back feed for chicken and hen.

SC COMBAVIPOR SA is one of the biggest company collecting and processing cereals in south-east of Romania :

- ✓ 400 T of feed/day
- ✓ Corn mill : 200T/day
- ✓ Wheat mill : 200T/day
- ✓ Storage capacity : ~ 100 000 T

One of the biggest user of sorghum in feed

Looking for partners for human consumption



2nd European

Sorghum Congress